



GPS/Online System to Track, Monitor and Manage your Fleet

FLEET MANAGEMENT SIMPLIFIED!

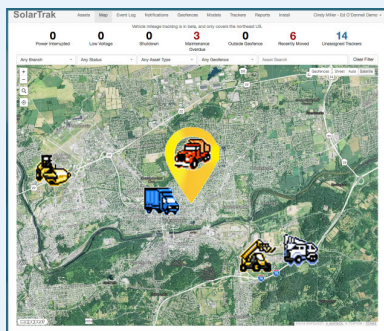
Keeping track of your equipment by simply logging into SolarTrak's website or smartphone app. Install SolarTrak GPS trackers, and you'll know where your equipment is, what the maintenance status is, and the number of engine-hours accumulated.

Increase the accuracy of your accounting, and NEVER miss work because a machine is parked at the wrong jobsite. All this for **less than \$10** per month per unit!

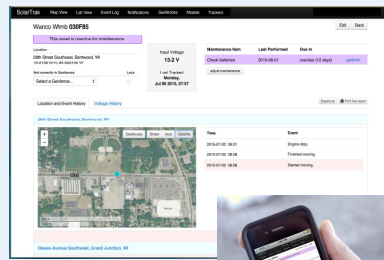


TRACK ■ MONITOR ■ MANAGE YOUR FLEET

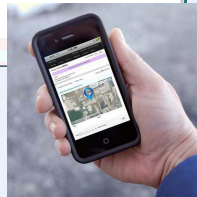
- Manage, monitor and track your equipment using the built-in modem and GPS system.
- Get automatic notifications and alerts when equipment is moved or needs servicing.
- Create geofences - equipment borders (i. e., the perimeters of the work zone) - and be alerted when equipment is moved.
- Track maintenance needs, battery life, engine-hours, and view voltage history. Ensure that your equipment is ready for the job.
- Add mileage tracking, mileage by state for IFTA compliance, maintenance based on mileage and "Replay a Day".



View equipment on satellite or street maps



All data can be viewed online, or view using our mobile app.



FREE Demo: Call 1-484-223-4994

EASY ACCESS TO CRITICAL DATA

Use your computer, laptop or cell phone to stay in control. You can check:

- Location and movement history
- Engine hours
- Battery voltage and status

SolarTrak's data can also assist with:

- Regularly scheduled maintenance
- On-rent/off-rent efficiency
- Equipment utilization
- Mileage tracking
- Theft deterrent

SIMPLE TO INSTALL!

Simply attach the two nodes to the terminals on your equipment's battery and mount the box with exposure to the sky. That's it!

Next, call SolarTech to set up your account and we'll activate the system. You're ready to roll!



Affordable GPS Fleet Management
...only \$10 per tracker per month!



www.solar-trak.com

created by
Solar Technology, Inc. **SOLARTECH®**



GPS/Online System to Track, Monitor and Manage your Fleet

SolarTrak consists of a unit that attaches to your equipment's battery terminals and is mounted on or in the equipment. Your choice of internal or external antennae. Easy to install - nothing for you to adjust or manually configure.



DIMENSIONS AND DETAILS

Unit Width 3.95" (10.03 cm)
 Unit Length 5.3" (13.46 cm)
 Unit Height..... 1" (2.54 cm)
 Weight..... .686 pounds (11 ozs)
 Unit Construction Waterproof box
 Connectors 5/16" Ring terminals
 connect to asset's
 battery

GPS TRACKER UNIT

Operating Voltage 12 volts DC (nominal)
 Battery Type 3 volt lithium ion
 No. of Batteries 2 (provides up to 72
 hours of operation)

FREQUENCY OF DATA TRANSMISSION REPORTING

While Moving Every 5 minutes
 While Static Every 30 minutes

ANTENNA OPTIONS

Internal antenna
 are included
 in the \$9.95
 monthly rent.

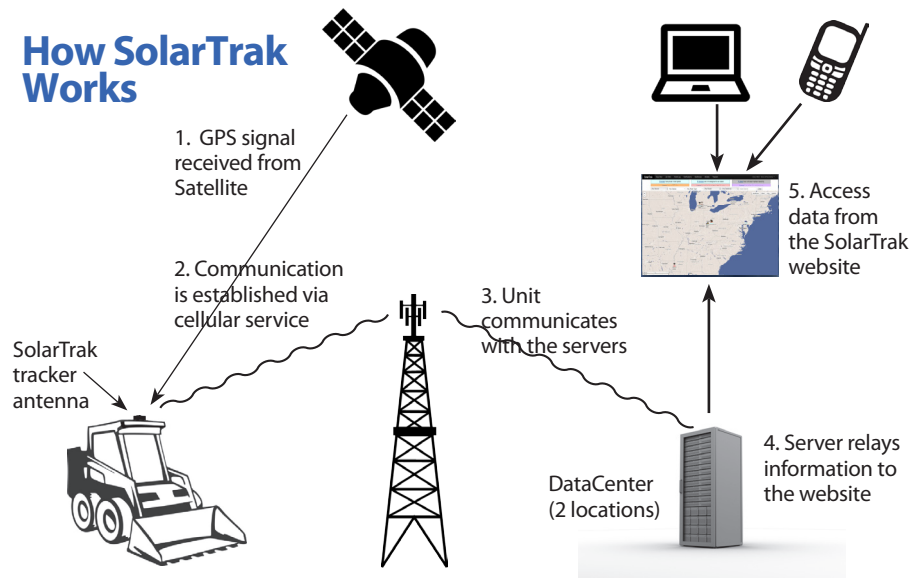


External antenna are available for \$1.00
 more per month. (Rental Option)
 Choose either Permanent (Screw) Mount
 or Magnetic Mount

ONLINE FEATURES

MAP VIEW Assets with SolarTrak units appear as icons.
 Choose from Street, Geofence or Satellite views
 MODEL LIST Lists all your equipment by manufacturer and model number
 TRACKER LIST Lists SolarTrak devices by serial number, last contact and the
 equipment assigned to the tracker
 LIST VIEW..... Shows when maintenance is due, when an asset is moved and if
 or when power is interrupted.
 ASSET DATA VIEW Full data on each asset: includes a summary, plus maps showing
 each move by location and event, voltage history and engine
 hours over a user-defined period of time
 GEOFENCES User-defined geographic areas to contain and track assets
 ALERTS/NOTIFICATIONS Include maintenance due, asset moved, power interruptions
 User defined: select from 14 options including:
 Starting and Ending a move
 Entering and Leaving a Geofence
 GPS Fix lost or regained
 Communications lost or recovered
 MILEAGE FUNCTION..... Add a separate license to track mileage, get maintenance alerts
 based on mileage, see "Replay a Day" and check speed at any
 point - plus "Mileage by State" for IFTA Fuel Tax compliance

How SolarTrak Works



NOTE: Optimal performance depends on proper installation. Antennae must be installed with clear access to the sky

Phone **484-223-4994**

www.solar-trak.com



Solar Technology, Inc.
 7620 Cetronia Rd. Allentown, PA 18106

