

# ST-5000 SERIES STANDARD TRACKER



## FLEET MANAGEMENT SIMPLIFIED!

Managing, monitoring and tracking your fleet just got a whole lot easier! This 5th generation Standard Tracker is a more robust version of our previous tracker. The ST-5000 provides:

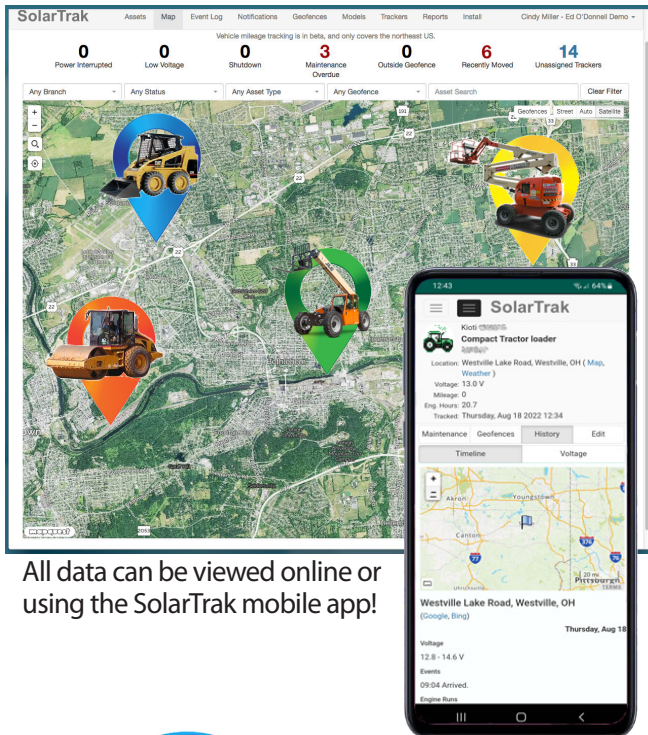
**IMPROVED GPS & CELLULAR PERFORMANCE** - Tracker is always connected to the cellular provider.

**SMALLER FOOTPRINT** - ST-5000 has a smaller footprint than all previous trackers!

**FASTER PROCESSING** - Allowing for almost instantaneous updating for GPS coordinates.

**RECHARGEABLE BATTERY** - No downtime for this tracker! Asset's battery dead? The rechargeable battery will be able to track your asset for up to 30 days! Power restored? The tracker automatically connects and resumes tracking.

**ECONOMICAL POWER DRAW** - The tracker uses significantly less power than previous trackers, putting less strain on your asset's batteries.



All data can be viewed online or using the SolarTrak mobile app!

Simple to install and assign, start tracking your equipment in just minutes!

For **just under \$10 per month** per unit, you'll NEVER miss out on a job because misplaced equipment!

## TRACK \* MONITOR \* MANAGE YOUR FLEET

- Manage, monitor and track your equipment using the built-in modem and GPS system.
- Create Geofences - equipment borders (i. e., the perimeters of the work zone). Receive alerts if equipment moves in or out of the zone.
- Receive automatic notifications and alerts when equipment is moved or needs servicing.
- Track maintenance needs, battery life, engine-hours, and view voltage history. Ensure that your equipment is ready for the job!
- Vehicle Mileage License available! Track your equipment's route per day, set speed limits alerts, mileage by state reporting for IFTA compliance.



**Affordable GPS Fleet Management**  
**...less than \$10 per tracker per month!**

**Call for a FREE Demo!**  
**1-484-223-4994**

**www.solar-trak.com**

created by  
Solar Technology, Inc. **SOLARTECH®**

# **solartrak** GPS/Online System to Track, Monitor and Manage your Fleet

The ST-5000 Series Standard Tracker attaches to your equipment's battery terminals and is mounted on or in the equipment. Your choice of internal or external antennas. Easy to install - nothing for you to adjust or manually configure.

## SIMPLE TO INSTALL

1. Make sure your tracker has a clear view of the sky and is mounted on a flat, stable surface.
2. Simply attach the two ring terminals to your equipment's battery.
3. Next, call SolarTrak to set up your account and we'll activate the system.

You're ready to go!



## UNIT SPECIFICATIONS

<b>DIMENSIONS</b>	3" x 4.75" x 1.375" (7.6 x 12.1 x 3.5 cm)
<b>WEIGHT</b>	11 oz. (.686 lbs/312 g)
<b>CONSTRUCTION</b>	Waterproof box
<b>CONNECTORS</b>	5/16" Ring terminals connect to assets battery
<b>INPUT VOLTAGE</b>	9 - 30V
<b>NOMINAL VOLTAGE</b>	12V, 24V
<b>OPERATING TEMP</b>	-13°F to 158 °F (-25°C to 70°C)
<b>INTERNAL BATTERIES</b>	Rechargeable Proprietary 4.8V 500 mAh NiMH
<b>FREQUENCY OF DATA TRANSMISSION AND REPORTING</b>	
<b>WHILE RUNNING</b>	Every 2 minutes
<b>WHILE STATIC</b>	Every 30 minutes

## ONLINE FEATURES

**MAP VIEW** - Assets with SolarTrak appear as icons. Choose from Street, Geofence or Satellite views.

**MODEL LIST** - Lists all your equipment by manufacturer and model number.

**TRACKER LIST** - Lists SolarTrak devices by serial number, last contact and the equipment assigned to the tracker.

**LIST VIEW** - Shows when maintenance is due, when an asset is moved and if or when power is interrupted.

**ASSET DATA VIEW** - Full data on each asset: includes a summary, plus maps showing each move by location and event, voltage history and engine hours over a user-defined period of time.

**GEOFENCES** - User-defined geographic areas to contain and track assets

**ALERTS/NOTIFICATIONS** - Include maintenance due, asset moved, power interruptions. User-defined notifications also available.

## ANTENNA OPTIONS

**Internal antenna:**  
included in the \$9.95 monthly rent.

**External antenna:**  
available for \$1.00 more per month.  
(Rental Option)  
Choose either Permanent (Screw) Mount or Magnetic Mount

**MODEL  
5020-S  
SCREW  
MOUNT**



**MODEL  
5020-M  
MAGNETIC  
MOUNT**



## LED INDICATOR

### RED LED INDICATOR

Will indicate connection upon install. Please see install guide for further information.

## WARRANTY INFORMATION

**PURCHASE:** 5-Year Limited Warranty

**RENT:** Under warranty for the duration of the lease, with the exception of physical damage or misuse of unit.



**484-223-4994**



**info@solar-trak.com**



**www.solar-trak.com**



Solar Technology, Inc.  
7620 Cetronia Rd. Allentown, PA 18106



In compliance with  
Telematics Data Standards



Made in the USA