

BT-5000 Series

PRODUCT GUIDE

Battery Tracker for Non-Powered Assets

No battery, no problem!! SolarTrak's Battery Powered Tracker is the perfect solution to keep tabs on all your non-powered assets.

You determine how often you check your assets - 1, 2, or 4 times daily. The integrated battery pack can provide more than **5 years*** of tracking ability on your equipment.

Need to locate your equipment immediately? The "Live View" function in SolarTrak will give you the current tracker status.

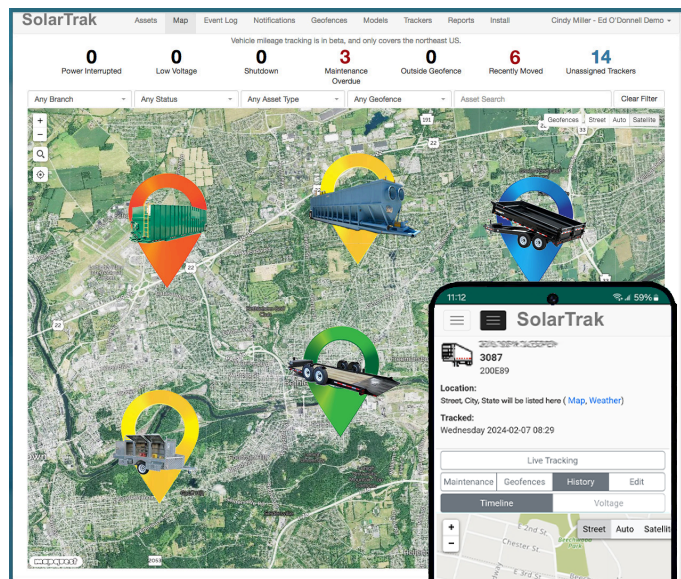
Simple to install, and no antenna needed!!

For **just under \$12 per month** per unit, you'll NEVER miss out on a job because your equipment can't be located!



MONITOR, & MANAGE YOUR ASSETS

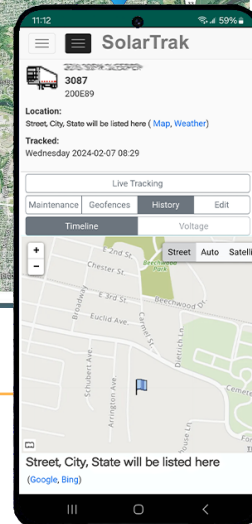
- » Manage, monitor, and track your equipment from your PC or Smartphone.
- » Create Geofences - equipment borders (i. e., the perimeters of the work zone). Receive alerts if equipment has moved upon tracker check-in.
- » Ensure your equipment is ready for the job. Track maintenance needs and equipment location.
- » Receive text alerts when equipment is moved or requires servicing.
- » User programmable tracker - determine when and how often the location will be checked. Select from 1, 2, or 4 times per day.
- » Ping function provides current tracker status.



All data can be viewed online or using the SolarTrak mobile app!



**CALL FOR A
FREE DEMO!
(484) 223-4994**



Learn more at www.solar-trak.com

BT-5000 Series

Battery Tracker

**Simply mount the SolarTrak Battery Powered Tracker on your equipment, with a clear view of the sky.
No antenna needed. Easy to install - nothing for you to adjust or manually configure .**

Simple to Install

1. Mount the tracker on the outside of your equipment, face up, at a stable high location, and with a clear view of the sky.
2. Next, call SolarTech to set up your account and we'll activate the system.

You're ready to go!

Frequency of Data Transmission Reporting

User Defined..... 1, 2, or 4 times per day

The BT-5000 is always connected to the network, providing the tracker status, including the cell signal, battery voltage and GPS information, when pinged (Live View) or during user-defined data transmission times.

Battery Life

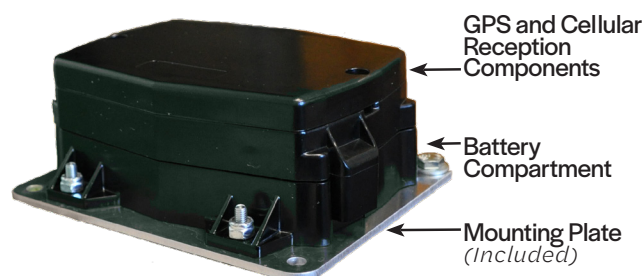
(*Life expectancy based on number of location check-ins per day.)

1x72 months +
2x60 months +
4x42 months +

Unit Dimensions and Details

	Tracker Only	Tracker with Mounting Plates
Unit Height	2.25" (5.175 cm)	2.375" (6.034 cm)
Unit Width	4.7" (11.94 cm)	5.0" (12.7 cm)
Unit Length	5.7" (14.487 cm)	6.0" (15.24 cm)
Unit Weight	1.6 lbs (0.723 kg)	2.0 lbs (0.907 kg)
Unit Construction.....	Waterproof Box	
Battery Pack	Proprietary	

Tracker Sections



Optional Mounting Bracket

If mounting your tracker on the side of your equipment, the optional mounting bracket (pictured to the right) will provide an enhanced stable platform for your tracker.



Warranty Information

HARDWARE

Purchase.....5-Year Limited Warranty
Rent.....Under warranty for the duration of the lease, with the exception of physical damage or misuse of unit.

BATTERY

Purchase/Rent.....5-Year Limited Warranty (prorated)

Replacement battery packs are available for \$100 each. If the battery pack installed in the unit fails during the warranty period, a discount will be applied to the purchase of a new battery pack.

Learn more at www.solar-trak.com