

ST-5000 Series

PRODUCT GUIDE

Standard Tracker

Managing, monitoring, and tracking your fleet just got a whole lot easier! This 5th generation Standard Tracker is a more robust version of our previous tracker, and is available for use in the US (Model # ST-5000) and Canada (Model # STC-5000). The ST-5000 provides:

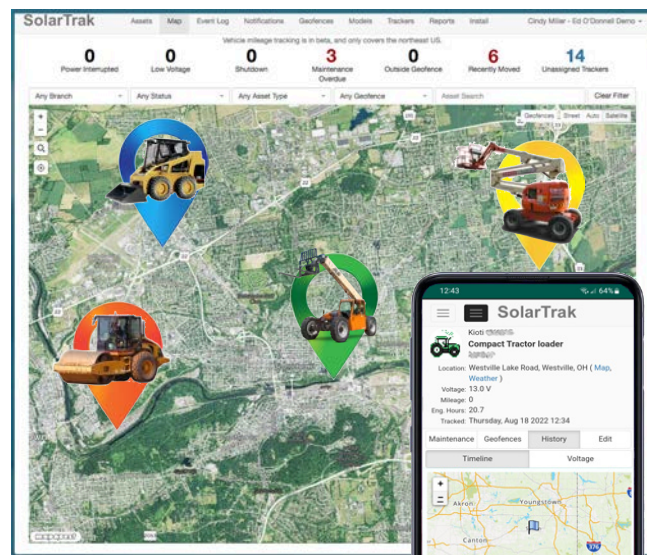
- » Improved GPS & Cellular Performance
- » Faster Processing
- » Smaller Footprint
- » Rechargeable Battery
- » Economical Power Draw

Simple to install and assign, start tracking your equipment in just minutes!

For **just under \$10 per month** per unit, you'll NEVER miss out on a job because of misplaced equipment!

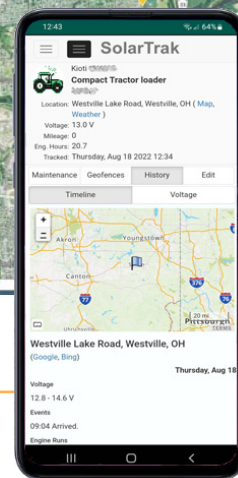
TRACK, MONITOR, & MANAGE YOUR FLEET

- » Manage, monitor, and track your equipment using the built-in modem and GPS system.
- » Create Geofences - equipment borders (i. e., the perimeters of the work zone). Receive alerts if equipment moves in or out of the zone.
- » Receive automatic notifications and alerts when equipment is moved or needs servicing.
- » Track maintenance needs, battery life, engine-hours, and view voltage history. Ensure that your equipment is ready for the job!
- » Vehicle Mileage License available! Track your equipment's route per day, set speed limits alerts, mileage by state reporting for IFTA compliance.



All data can be viewed online or using the SolarTrak mobile app!

**CALL FOR A
FREE DEMO!
(484) 223-4994**



Learn more at www.solar-trak.com

ST-5000 Series

Standard Tracker

The ST-5000 Series Standard Tracker attaches to your equipment's battery terminals and is mounted on or in the equipment. Your choice of internal or external antennas. Easy to install - nothing for you to adjust or manually configure.

Simple to Install

1. Make sure your tracker has a clear view of the sky and is mounted on a flat, stable surface.
2. Simply attach the two ring terminals to your equipment's battery.
3. Next, call SolarTrak to set up your account and we'll activate the system.

You're ready to go!

Unit Specifications

DIMENSIONS 3" x 4.75" x 1.375" (7.6 x 12.1 x 3.5 cm)

WEIGHT 11 oz. (.686 lbs/312 g)

CONSTRUCTION Waterproof box

CONNECTORS..... 5/16" Ring terminals connect to assets battery

INPUT VOLTAGE 9 - 30V

NOMINAL VOLTAGE 12V, 24V

OPERATING TEMP -13°F to 158 °F (-25°C to 70°C)

INTERNAL BATTERIES ... Rechargeable Proprietary
4.8V 500 mAh NiMH

FREQUENCY OF DATA TRANSMISSION AND REPORTING:

WHILE RUNNING Every 2 minutes

WHILE STATIC..... Every 30 minutes

Antenna Options

- » **Internal antenna:** Standard antenna
- » **External antenna:** Choose either permanent (screw) mount or magnetic mount.



Model 5020-S
Screw Mount



Model 5020-M
Magnetic Mount



LED Indicator

A red LED light indicates connection upon install.
Please see install guide for further information.



US Model # ST-5000

Canadian Model # STC-5000

Online Features

- » **Map View:** Assets with SolarTrak appear as icons. Choose from Street, Geofence or Satellite views.
- » **Model List:** Lists all your equipment by manufacturer and model number.
- » **Tracker List:** Lists SolarTrak devices by serial number, last contact and the equipment assigned to the tracker.
- » **List View:** Shows when maintenance is due, when an asset is moved and if or when power is interrupted.
- » **Asset Data View:** Full data on each asset: includes a summary, plus maps showing each move by location and event, voltage history and engine hours over a user-defined period of time.
- » **Geofences:** User-defined geographic areas to contain and track assets
- » **Alerts/Notifications:** Include maintenance due, asset moved, power interruptions. User-defined notifications also available.

Warranty Information

PURCHASE..... 5-Year Limited Warranty

RENT Under warranty for the duration of the lease, with the exception of physical damage or misuse of unit.

Learn more at www.solar-trak.com