



# Standard Tracker Models ST-5020-S/ST-5020-M

## Tracker Installation Guide for units with External Antenna



### Installing the Tracker

Unit should be attached to equipment with provided hardware, or another similar method to ensure a secure mounting.

1. Choose a location and attach the tracker. Make sure it will be within reach of the battery connection.

2. Install the antenna with clear access to the sky. Use mounting metal plate if surface is not metal for best cellular reception.

3. Connect the tracker's power wires to the equipment's battery to provide 12 to 24 VDC to SolarTrak. The wire with the fuse holder MUST be attached to the Positive (+) battery terminal. Coil any excess wire loosely.

4. Last, connect the tracker to the battery using the gray waterproof connector.



BATTERY WIRES

TRACKER

### After Installation

A. Tell your company's SolarTrak Administrator which SolarTrak unit (using the unit's serial number) has been installed on which piece of equipment. Tell your administrator the Manufacturer, the Model number, plus any company identifier (like your inventory number).

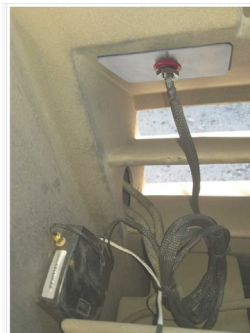
B. Once installation is completed, the equipment will appear in SolarTrak online in the "Trackers" view as "Unassigned".

C. Once your company's SolarTrak Administrator assigns a specific SolarTrak unit to a specific piece of equipment, the equipment will appear online in the Map View and List View and can be tracked.

### BAD INSTALL CHOICES

Do not install on moving parts, locations where water collects, or on sides of vehicles without constant access to the sky. These locations will prevent the GPS from working correctly.

### Examples of Ideal Installations:



Shown with metal plate for fiberglass installation



GOOD ANTENNA INSTALLATION LOCATIONS are on roofs, with constant access to the sky. Out of harm's way.

### Screw Mount Antenna

Drill a hole and install antenna with unobstructed view of the sky for best satellite reception, then tighten nut to secure.



### Magnetic Antenna

Simply attach with clear view to the sky - no hole needed.

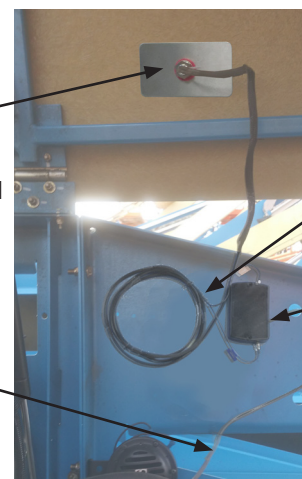
Drill hole to mount external antenna facing the sky

Use metal plate under antenna if surface is not metal

Power cord connects to the battery

Coil any extra wire loosely.

Tracker unit



[www.solar-trak.com](http://www.solar-trak.com)

SolarTrak was designed by



Any questions? Call SolarTrak Support: **1-484-223-4994**

7620 Cetronia Rd, Allentown, PA 07/2025